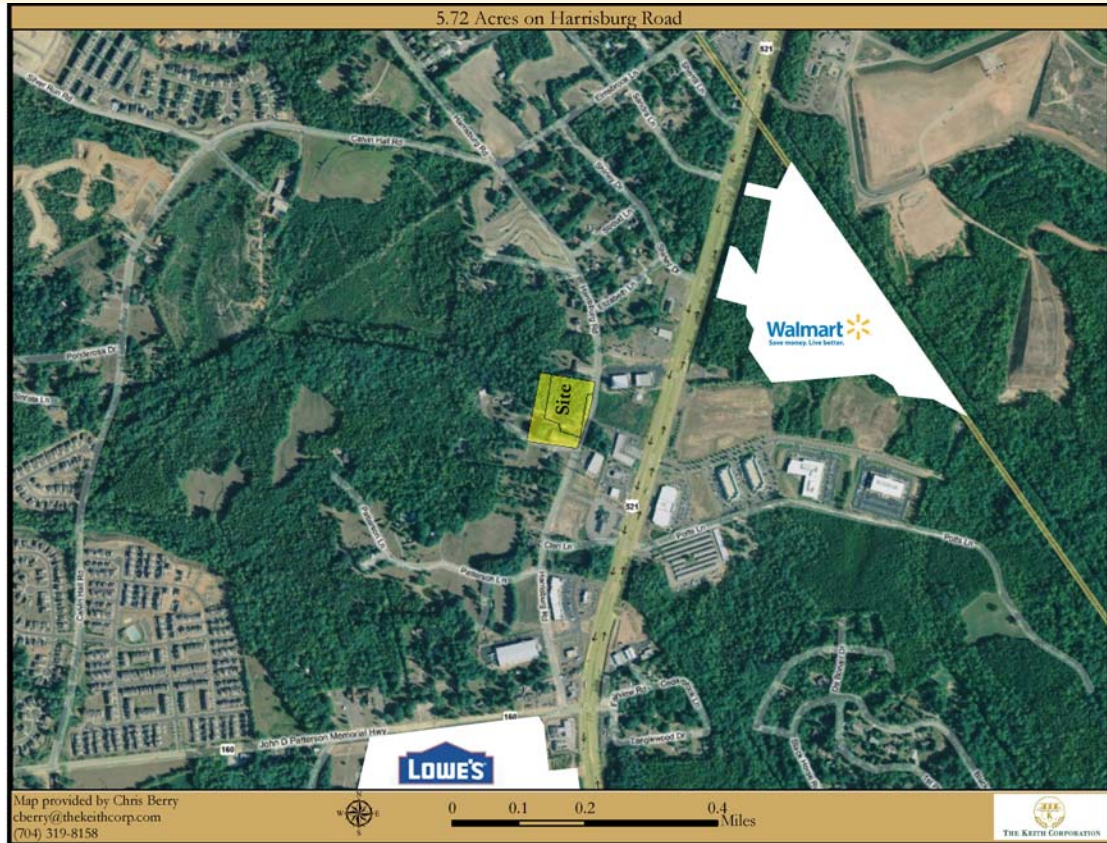


B-3 Land Available

9873 & 9883 Harrisburg Road (Lancaster County)
Fort Mill, South Carolina 29707



- +/- 5.72 acres for sale or build-to-suit.
- Great location on Harrisburg Road which runs parallel to Highway 521.
- Pricing: \$175,000/gross acre. Call for build-to-suit proposal.
- Lancaster County South Carolina tax parcels 0005-00-093.06 & 0005-00-093.02.
- Zoned B-3.
- Near the new Super Walmart (under construction) and the newly constructed Lowe's Home Improvement.

Contact:
Chris Berry
704-319-8158
cberry@thekeithcorp.com
www.thekeithcorp.com



THE KEITH CORPORATION
5935 Carnegie Blvd, Suite 200
Charlotte, NC 28209
704-365-6000/704-365-0733 fax

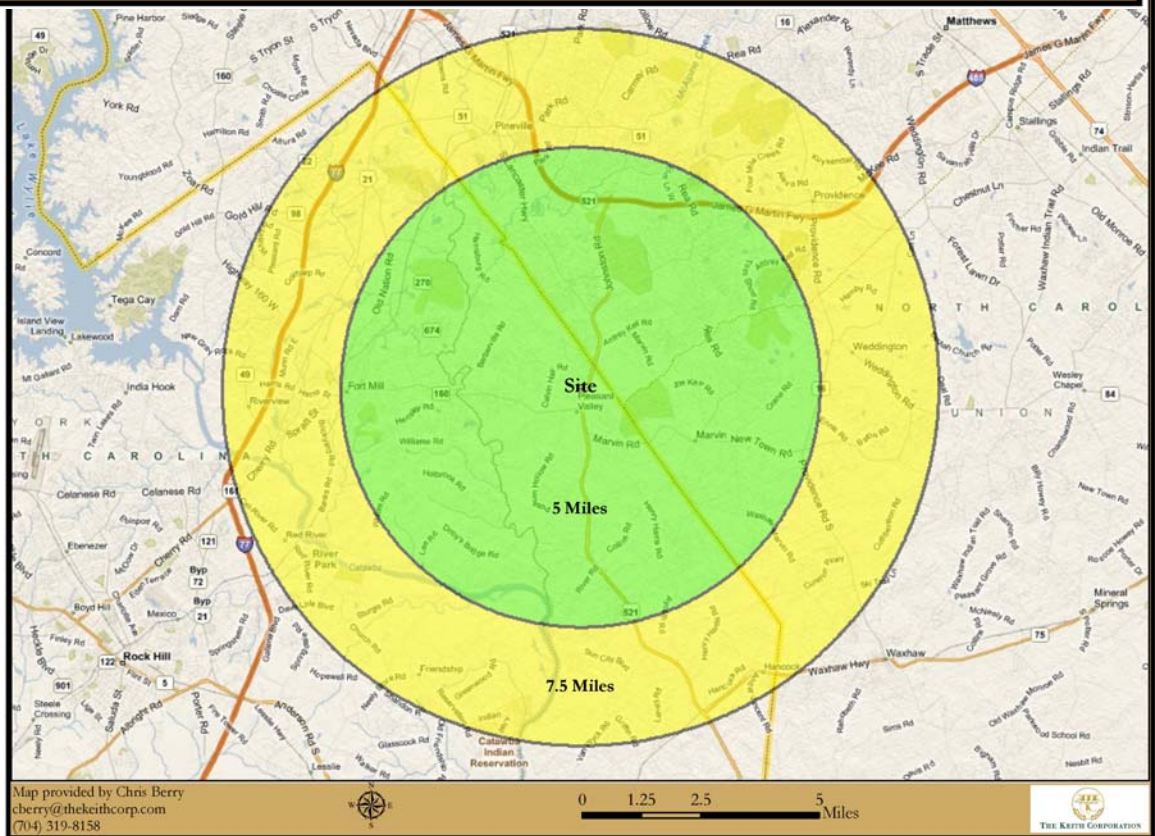
5.72 Acres on Harrisburg Road



Map provided by Chris Berry
 cberry@thekeithcorp.com
 (704) 319-8158



0 125 250 500 Feet



Map provided by Chris Berry
 cberry@thekeithcorp.com
 (704) 319-8158



0 1.25 2.5 5 Miles



All information furnished regarding property available is from sources deemed reliable, but no warranty or representation is made as to the accuracy thereof and same is submitted subject to errors, omissions, change of price, rental, or other conditions, prior sale or lease, or withdrawal without notice.